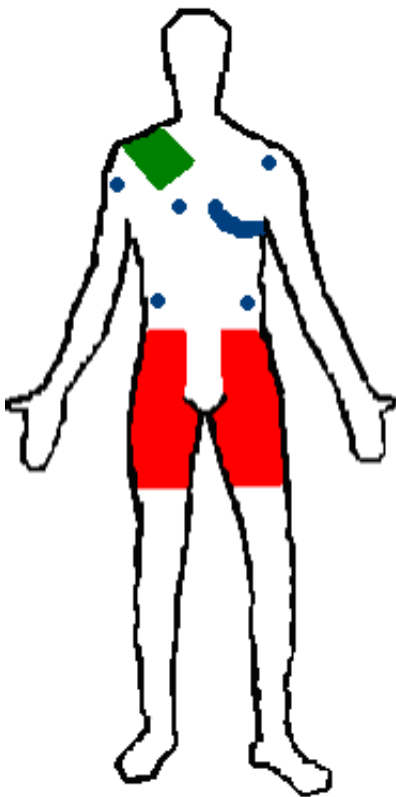
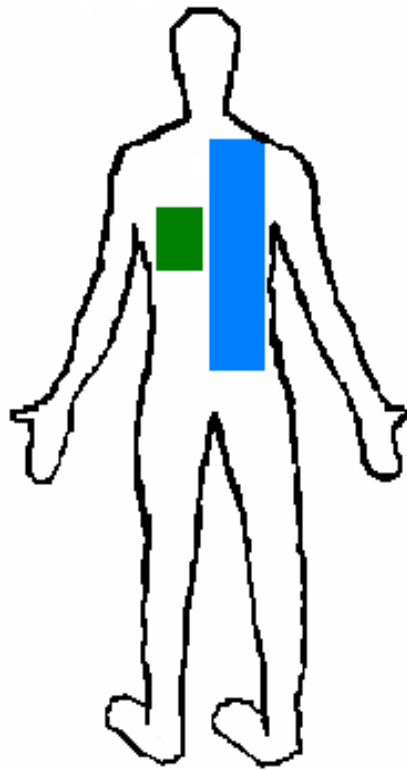


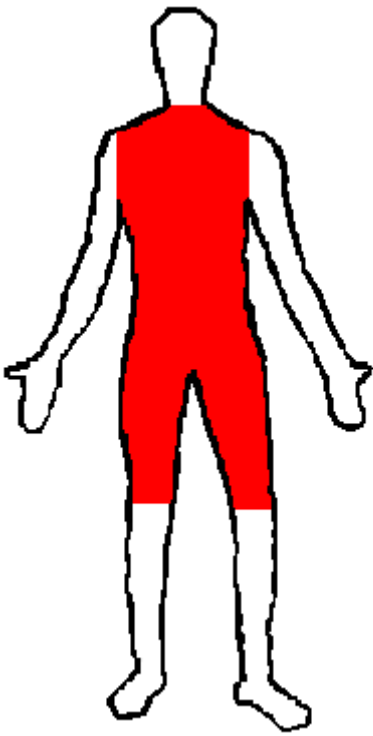
**FRONT**



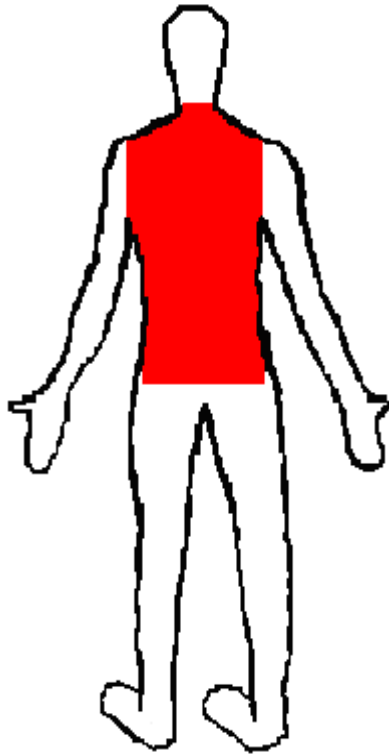
**FRONT**



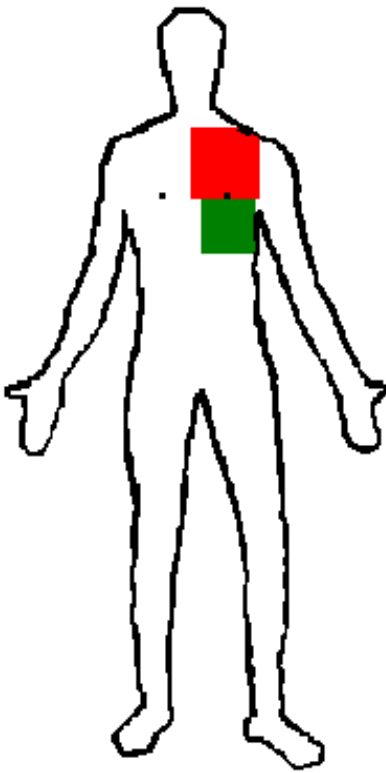
**BACK**



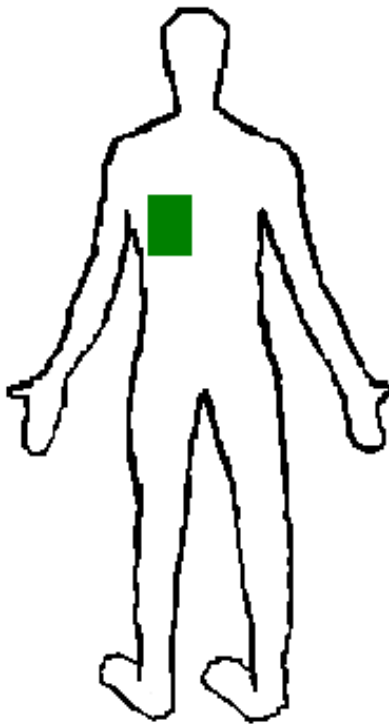
**FRONT**



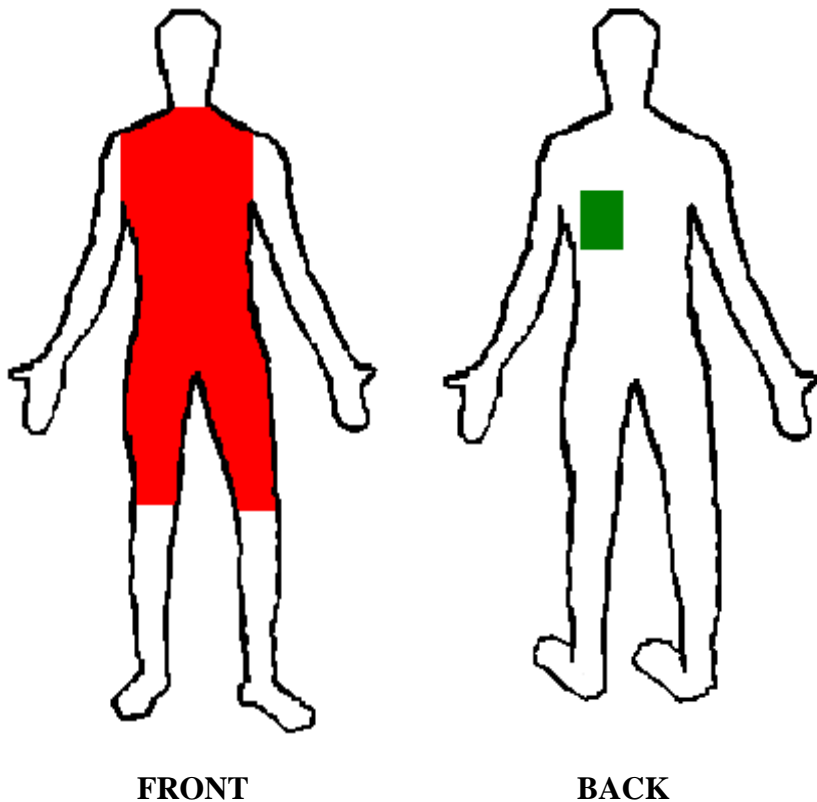
**BACK**



**FRONT**



**BACK**



### **Guidelines for the Insertion of Foley Catheters:**

- Insert a foley catheter or apply a condom catheter for very long procedures (PVI, Array, RVOT/V tach/PVC ablations, A tach ablations)
- Insert a foley catheter or apply a condom catheter for the insertion of a BiV ICD if pt is unable to hold his/her urine for 3 hours.
- A good rule of thumb: Ask the patient how often they get up to urinate during the night. If the patient gets up more than once, then they need a foley catheter.
- To decide if a male can use a condom catheter, ask if he can urinate lying down. If he thinks he can, apply a condom catheter in lieu of inserting a foley catheter.
- Patients often think that they don't need a foley because they have had nothing to drink. Please remind them that they are receiving IVF. Also, consider whether the patient takes a diuretic and when the last dose was taken.
- Insert a 14 Fr foley for women and a 16 Fr foley for men. Use a leg strap to stabilize the catheter. Write the date of insertion on the foley bag.

### Cath Lab Prep

Clip from just below the level of the belly button to the knees. Be sure to get all the hair in groin crease and clip as medially as possible. Also, please trim any remaining long hairs that may enter the sterile field.

### EPS/Ablation Prep

Prep the groin as above. Plus, prep for a 12-lead EKG (blue areas on the front picture), for defibrillator pad placement (green areas on the front and back picture), and for grounding pad placement (blue are on back picture).

### Navex/Array Prep

Prep from neck to knee on the front. Clip patient from the back of the neck (there is a patch that goes on the nape of the neck) to the waistline on the back.

### Implant Prep (PPM, ICD, BiV Devices, Loops)

Prep for defibrillator pad placement on the front and the back of patient (green areas). Clip the implant site from the collar bone to the nipple and from the sternum to the axillary line (red area).

### Laser Lead Extractions

Clip from the neck to the knees  
on the front and prep for  
defibrillator pad placement on  
the back (green area).